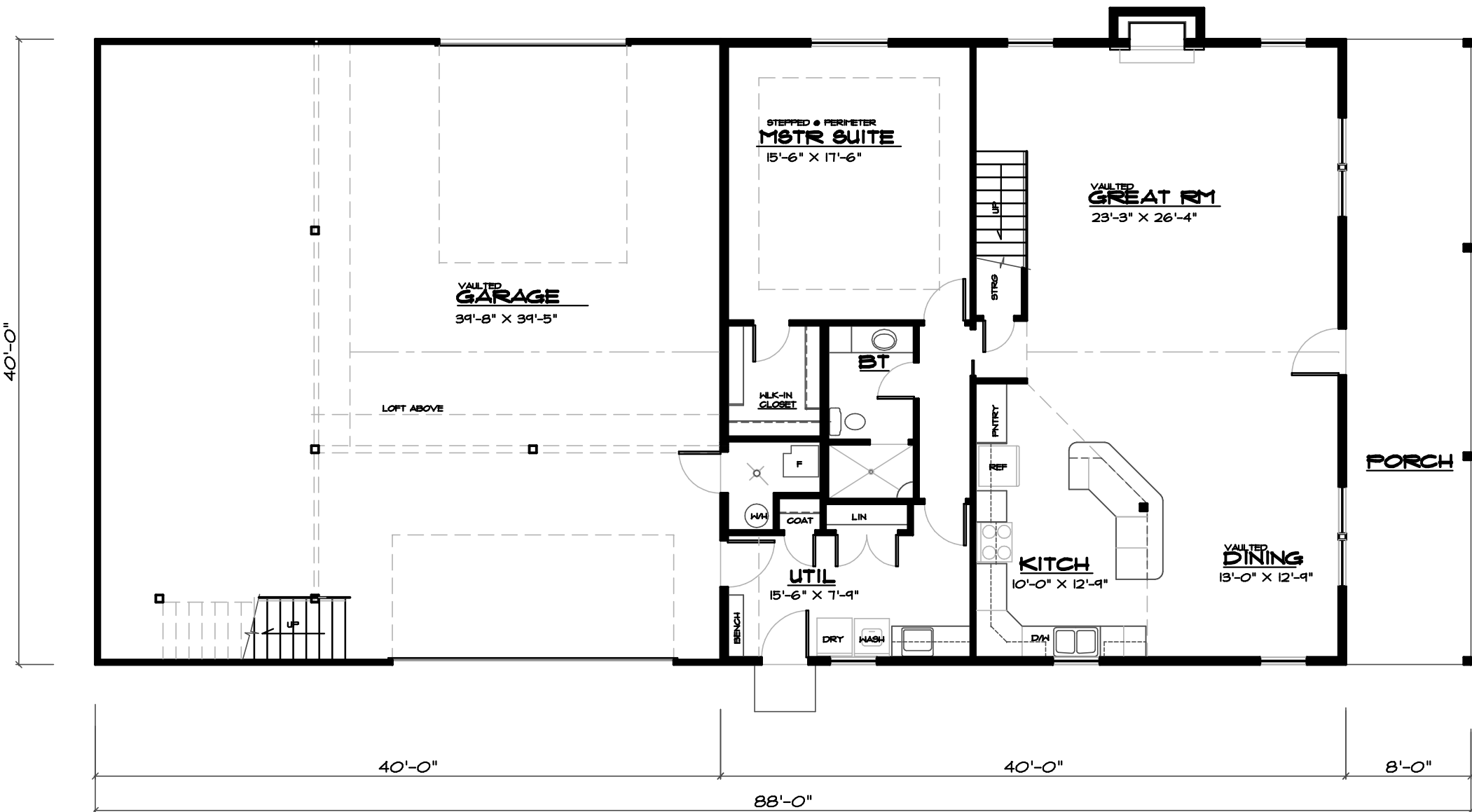




LEFT ELEVATION
SCALE _____ NTB



FRONT ELEVATION
SCALE _____ NTB

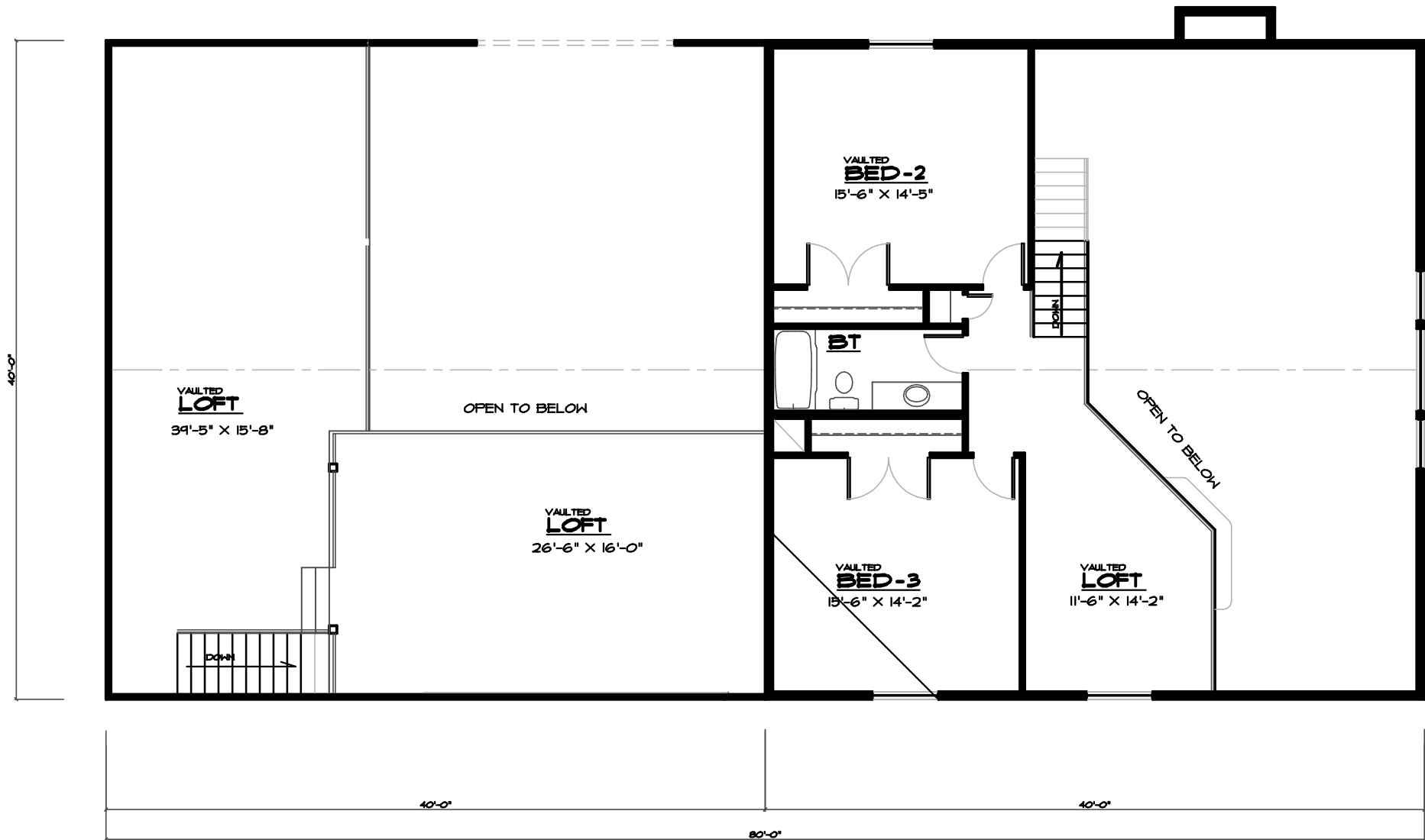


MAIN FLOOR PLAN

SCALE

1641 SQ. FT. MAIN 834 SQ. FT. UPPER
2475 TOTAL SQ. FT.

NTS



UPPER FLOOR PLAN

SCALE
834 SQ. FT. UPPER

NTS